



# PRODUCT GUIDE

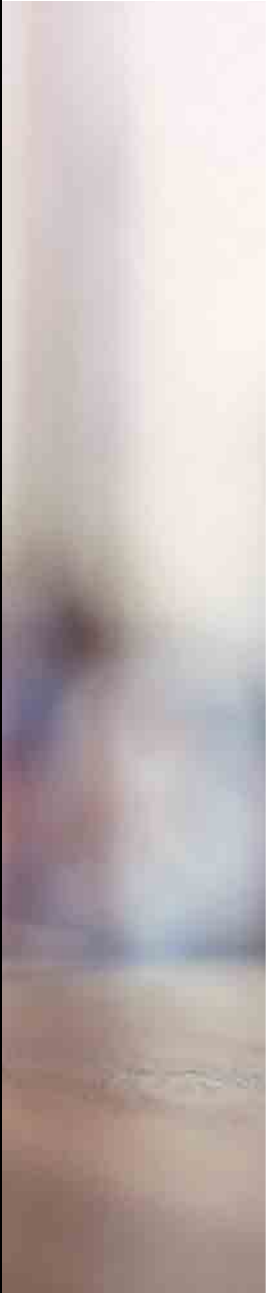






# CONTENTS

- 2 *Introduction*
- 4 *Barber scissors*
- 6 *Cut throat razor & strop*
- 7 *Straight razors / shavettes*
- 9 *Shaving brush & bowl*
- 10 *Safety razors*
- 11 *Personal grooming*
- 13 *Shaving set*
- 14 *Barber & beard combs*
- 16 *Barber shop retail display*





# INTRODUCTION

*Barbering is one of the oldest professions. Some jobs are... just jobs. Barbering is a craft, a passion. Barbering is a way of living. Barbers travelled with the first navies, encountered indigenous tribes then introduced their tattoos to the Western world. Barbers were the first surgeons in medieval Europe, the first dentists. Men, both great and infamous are iconically pictured with their barbers.*

*Dark Stag have taken this history, this social relevance and created tools worthy of today's barber. A barbering life depends on tools you can trust. When I visit my barber I leave the world outside - the music, the style... the whisky.*

*When you have earned your stripes - Dark Stag have the tools.*

**Andrew Wiseman**  
Founder



*Dark Stag*  
SUPERIOR BARBER EQUIPMENT



# BARBER SCISSORS



**Classic design barber scissor providing durable performance.**

Dark Stag DS1 is a pure barber scissor. One micro serrated blade ensures a perfect trustworthy cut right to the tip. Heat treated stainless steel provides long lasting performance in this medium weight barber scissor. An innovative German design screw system provides a smooth feel. Finger rest is removable.

**Sizes available**

- 4838: 6.0"
- 4845: 6.5"
- 5071: 7.0"



Micro serrations



**Superior performance. Supremely sharp and versatile barber scissor.**

Dark Stag DS+ is the ultimate barber scissor. A razor sharp acute convex blade ensures the ultimate cut suitable for all types of work including more advanced techniques. The high performance Japanese stainless steel ensures long lasting precision and an effortless reliable feel. An ultra precise screw system provides both stable tension and a silent, smooth action free from resistance. Finger rest is removable.

**Sizes available**

- 4852: 6.0"
- 4869: 6.5"
- 5088: 7.0"







# CUT THROAT RAZOR & STROP



Produced in stainless steel our cut throat razor is the perfect tool for an old school close shave. With a rounded blade edge and wooden handle, the superbly hand crafted blade is hollow ground, polished and ready to shave. A few passes on the strop are all you need between shaves to ensure a perfect smooth glide across the skin. Storage pouch included.



Includes Storage Pouch

4890



Made from durable buffalo leather, our stop is the ideal tool for polishing and smoothing your cut throat razor blade for the ultimate close and comfortable shave. Use the coarse side for coarse edge alignment and the fine side for fine blade edge alignment. A padded handle provides comfort and a strong, reliable attachment ring will hook to a wall or many barber chairs.

5026



# STRAIGHT RAZORS / SHAVETTES

A shavette or replaceable straight blade razor is a relative of the traditional cut throat razor but, with the benefit of easily changeable blades. This straight razor uses half a traditional double edge blade so one blade can be used for 2 clients. Suitable for professional shaving, tidying and shaping beards, facial hair and the nape of the neck. Available with lightweight wooden or heavier stainless steel handle. Storage pouches are provided.



4913



Straight Razor

Wooden Handle



Includes  
Storage Pouch



5002



Straight Razor

Steel Handle



Includes  
Storage Pouch





# SHAVING BRUSH & BOWL



The Dark Stag shaving brush uses the most modern synthetic badger bristle to ensure a traditional look with modern benefits. The synthetic bristle is **non absorbent** so dries quickly. The bristles are secure, do not shed and are designed to stimulate and lift the beard to perfectly prepare for a close shave.



4944



The Dark Stag stainless steel shaving bowl is the perfect tool for whipping up a rich lather for wet shaving. The flat base provides stability.

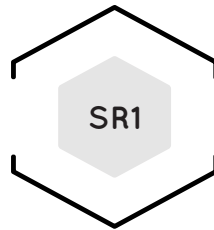


4876



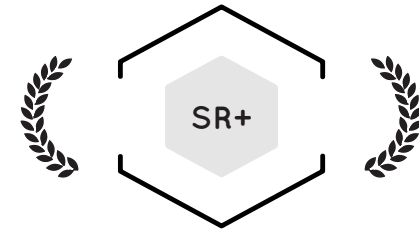
# SAFETY RAZORS

Using widely available double edge blades our safety razors are an elegant yet economical alternative to today's disposable plastic.



The SR1 is hand produced in steel and wood. This durable razor is perfectly balanced and the supreme feel is enhanced by its wooden handle.

4951




The SR+ is produced in a heavy duty, heavy wearing steel. The additional weight provides stability - enhanced by its knurled grip. The black plasma coating is durable and its look improves with age and use.



4968

# PERSONAL GROOMING



## Beard and Moustache Scissor

Designed for beard and moustache trimming and shaping with more accuracy for intricate work than clippers. Durable stainless steel construction. Storage pouch provided.



4883



## Mens Manicure Set

Everything a man needs to maintain his nails - a nail scissor, a real man's fold away slimline nail clipper, a cuticle pusher and claw tweezers - all in durable stainless steel. Storage wallet included.



4937





# SHAVING SET

The ultimate combination of our DS1 double edged safety razor, shaving brush, stainless steel shaving bowl and stainless steel stand for impressive and useful storage.



5019

# BARBER & BEARD COMBS

Dark Stag's barber combs contain carbon fibre to ensure extreme strength and durability.  
All are anti-static and heat resistant up to 230°C.



4920



Popular style for barbering with great flexibility and ideal for scissor over comb work.

Length 18.5cm  
Maximum depth 2.5cm  
Weight 10g



4975



Excellent all-round cutting comb suitable for scissor over comb work.

Length 18.3 cm  
Maximum Depth 2.5cm  
Weight 12g

# BARBER & BEARD COMBS



**Military Comb**

Longer comb designed for styling and grooming.

Length 21cm  
Maximum depth 2.9cm  
Weight 16g

4982



**Beard & Moustache Comb**

For full control of facial hair this anti static comb is produced in 100% natural and sublimely aromatic walnut wood. This rugged and durable pocket tool is hypoallergenic, easy on the scalp and has fine and wide tooth options.

Length 10cm

4999



# BARBER SHOP RETAIL DISPLAY

Barbers can now enable clients to take their experience home. Many of our tools provide the ultimate upgrade to the home grooming regime. We supply a superbly finished sapele wood display with engraved branding to offer a selection of your choice.



5095







[www.darkstag.com](http://www.darkstag.com)  
Tel: +44 (0)1903 209 409  
[info@darkstag.com](mailto:info@darkstag.com)